

## REPORT

# POLO FLAT ROAD PRECINCT 2 TREE ASSESSMENT

Lots 2 and 4 DP1285072

Issue B: 17.10.2022

Prepared for:

**Stantec Australia**

Eastern Core  
Level 4  
2 Constitution Avenue  
CANBERRA 2601

Enviro Links Design Pty Ltd  
Unit 5, 61 Dundas Court  
PHILLIP ACT 2606

P 02 6281 6066  
eld@envirolinks.com.au  
www.envirolinks.com.au  
ABN 64 078 436 478

## 1. INTRODUCTION

Enviro Links Design Pty Ltd was engaged by Stantec Australia to undertake the Tree Assessment (TA) for the Polo Flat Road Precinct 2 (Lot 2 and 4 DP1285072) project. This report highlights the value of individual trees and tree groups to assist with the development.

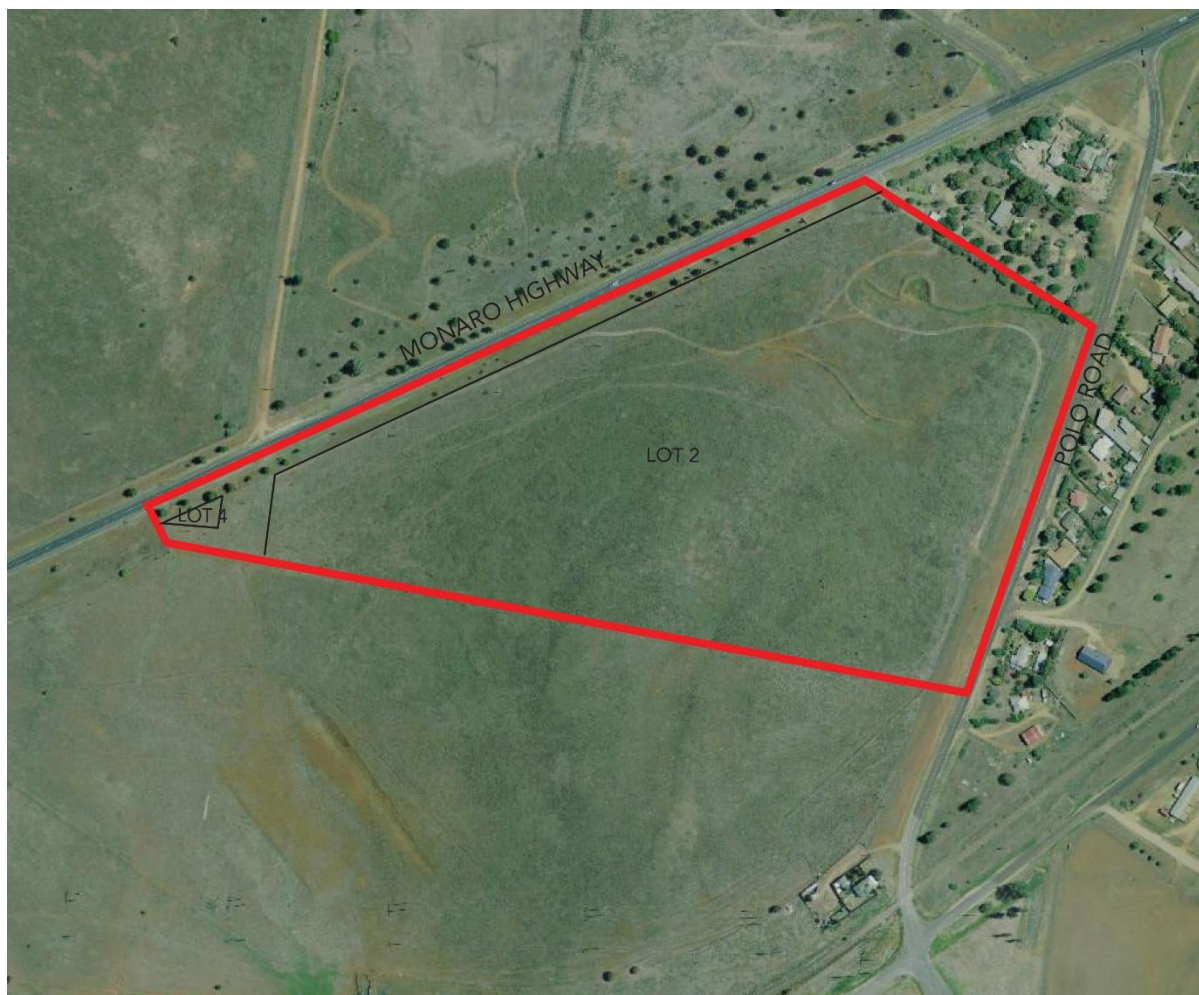


FIGURE 1: Extent of Tree Assessment

## 2. METHODOLOGY

This Tree Assessment was undertaken by non-invasive visual review means only. No coring, probing, excavation, dissection or laboratory analysis was undertaken. Assessments were made on visual and physical (external and above ground measurement) only.

The following describes in general terms the processes and criteria with which trees / tree groups were assessed.

### **Tree No / Group No**

- A unique reference number assigned to each tree / tree group

### **Botanical Name**

- Botanical name of the tree / predominant species of tree group

### **Height / Canopy Diameter (Physical Dimensions)**

- Height of tree / average height of tree group in metres (m)

- Canopy diameter in metres shown as the maximum crown width of the tree or group of trees

#### **Number of Trunks**

- Number of trunks at 1 metre above ground level

#### **Trunk Circumference**

- Single trunks circumference in metres at 1 metre above ground level
- Multiple trunks cumulative total of all trunks in metres at 1 metre above ground level

#### **General Health**

- Excellent (E), Medium (M), Fair (F) or Poor (P)

#### **Structural Defects / Decay**

- Structural defects or evidence of internal decay

#### **Past Damage / Root Disturbance**

- Evidence of past damage to the tree or disturbance within the root zone

#### **Disease / Infestation**

- Evidence of past or present disease or insect infestation

#### **Growth Stage**

- Juvenile (J), Semi-Mature (SM), Mature (M) or Over-Mature (OM)

#### **Quality Rating**

- Exceptional (E), High (H), Medium (M), or Poor (P)

#### **Notes**

- General comments and notes

### **3. QUALITY RATING**

#### **E - EXCEPTIONAL**

A tree / tree group that is an outstanding example of their species and have significant visual impact.

They have most of the following: mature specimens with grand appearance and stature, may have unusual character, may be a rare species, well balanced, cultural heritage importance, significant scientific value, presents a low hazard/safety risk.

Significant value within the landscape context of the site and should be preserved.

#### **H - HIGH**

A tree / tree group that is a good example of their species and have significant visual impact.

They have most of the following: high arboricultural value or potential, good form, good health, good size, little or no epicormic shoots or other arboricultural problems.

Good value within the landscape context of the site and should be preserved if possible.

#### **M - MEDIUM**

A tree / tree group that is generally complying with most of the following: reasonable form / reasonable current size, good health / growth potential, healthy specimen, presents a medium to low hazard / safety risk.

Has some value within the landscape context of the site and should be retained if appropriate to land use and future management cost and risks.

**P – POOR**

A tree / tree group generally complying with most of the following: specimen with poor growth or poor form and possible health problems, presents a high or very high hazard/safety risk.

Has little value within the landscape context and to be removed if necessary. Can be retained if appropriate to land use and future management costs and risks.

**D – DEAD**

Dead tree

## 4. TREE ASSESSMENT SUMMARY

This Tree Assessment was undertaken on the 12 October 2022. A total of 41 individual trees and 8 tree groups were assessed.

The trees are all exotic planted species.

The assessment identified the following individual trees:

- 10 Medium Value
- 27 Poor Value
- 2 Dead; and
- 2 unassessed value

The assessment identified the following trees groups:

- 2 Medium Value
- 6 Poor Value

The trees are a mix of Cupressus sp (species), Prunus sp, Malus sp, and Populus sp and Pyracantha sp.

Trees 34, 35, 36, 37 and tree groups G1, G2, G3, G4, G5 and G6 are verge trees to Polo Road. They are typically juvenile trees, some malus trees are stunted and it would be beneficial to remove and replant with ameliorate soils. G6 are Quercus sp that appears to be recently planted, they have substantial deadwood throughout and new growth is only showing close to the trunk, many branches appear to have died off.

Tree groups G7 and G8 are verge plantings to Monaro Highway. They form part of the landscape language at this entry to Cooma. They are typically paired with plantings on the opposite side of the road.

Trees 42, 43 and 44 are a deciduous species and weren't in leaf at the time of the survey. They showed signs of decline (dead branches), significant epicormic growth from the base, and there were beetles present on the trunks.

Trees 4 – 33 are located along the boundary with lot 2, as a group they offer some screening value but individually are not of significant landscape value. The trees are various Cupressus species, predominantly Cupressus sempervirens. The trees are an aging stand and some have declined or are dead (trees 22 and 26).

## APPENDIX A: TREE ASSESSMENT TABLE

Tree No / Group No	Botanical Name	Height (m)	Canopy dia. (m)	No. Trunks	Trunk circ. (m)	General Health (E/G/F/P)	Structural Defects / Decay (Y/N)	Past Damage / Root Disturbance (Y/N)	Disease / Infestation (Y/N)	Growth Stage (J/S/M/M/OM)	Quality Rating (E/H/M/P)	Comments
4	Cupressus lusitanica	4.5	4	2	3	G	N	N	N	M	P	
5	Cupressus lusitanica	5.5	7	1	3.75	F	N	N	N	M	P	
6	Cupressus lusitanica	7	4	1	0.95	F	N	N	N	M	P	Over shaded and on lean
7	Cupressus lusitanica	5	4	6	2.8	F	N	N	N	M	P	Poor form
8	Cupressus lusitanica	7.5	6	1	2.2	F	N	N	N	M	M	
9	Cupressus sp	7.5	3	1	1	P	N	N	N	M	P	On lean and sparse canopy
10	Cupressus sp	6	4	1	1	P	N	N	N	M	P	
11	Cupressus lusitanica	8	7	1	2.8	P	N	N	N	M	P	
12	Dead											
13	Cupressus sempervirens	7	6	2	1.2	G	N	N	N	M	M	
14	Cupressus sp	5	2	1	0.5	P	N	N	N	M	P	Over shaded, sparse canopy
15	Cupressus sp	7	5	1	3.2	G	N	N	N	M	M	
16	Dead											
17	Cupressus arizonica	6	5	2	2.2	F	N	N	N	M	P	
18	Cupressus sp	4	1	1	0.5	P	N	N	N	M	P	Crowded by other trees
19	Cupressus sempervirens	4	3	4	1.4	P	N	N	N	M	P	Sparse canopy
20	Cupressus sempervirens	6	6	1	3.1	P	N	N	N	M	P	Some dead branches in top of canopy
21	Cupressus sempervirens	7	6	3	3.8	F	N	N	N	M	M	
22	Cupressus sempervirens	4.5	4	1	0.6	P	N	N	N	M	P	Crowded by other trees
23	Cupressus sempervirens	5	7	3	3	P	N	N	N	M	P	Appear to be dying off
24	Cupressus sempervirens	6	5	1	1.1	F	N	N	N	M	P	
25	Cupressus sempervirens	5.5	3	1	0.5	F	N	N	N	M	P	Tall and affected by tree 12
26	Cupressus sempervirens	7	6	3	4.2	G	N	N	N	M	M	
27	Pyracantha sp	3	2	-	-	F	N	N	N	M	P	Scrappy form
28	Cupressus sempervirens	6.5	6	3	4.5	G	N	N	N	M	M	
29	Cupressus sempervirens	6.5	5.5	3	-	G	N	N	N	M	M	Some deadwood
30	Cupressus sempervirens	5	2	1	1.2	P	N	N	N	M	P	Poor form and dead lower branches

31	Cupressus sempervirens	4.5	2	1	0.3	F	N	N	N	M	P	Poor form / on lean
32	Cupressus sempervirens	4.5	2	2	1.2	F	N	N	N	M	P	Poor form
33	Cupressus sempervirens	7	10	1	3.2	G	N	N	N	M	M	
34	Populus sp	5.5	4	3	0.9	G	N	N	N	SM	M	
35	Malus sp	2.4	2	1	0.22	F	N	N	N	J	P	Epicormic growth from base
36	Prunus sp	3	2.5	-	-	F	N	N	N	J	P	Multi-leader / shrub habit
37	Prunus sp	3	2.5	-	-	F	N	N	N	J	P	Multi-leader / shrub habit
38	Cupressus arizonica	4	4.5	1	-	G	N	N	N	M	P	Stunted
39	Cupressus sempervirens	7	9	1	1.8	G	N	N	N	M	M	
40	Cupressus sp	5	3	1	1.1	F	N	N	N	M	P	
41	Cupressus sp	4	4	1	0.56	F	N	N	N	M	P	Poor form
42	Deciduous sp	7	3	1	0.56	-	N	Y	N	M	-	Not in leaf, only epicormic growth showing signs of budding, shows signs of decline
43	Deciduous sp	6	3	1	0.53	-	N	Y	N	M	-	Not in leaf, only epicormic growth showing signs of budding, shows signs of decline
44	Deciduous sp	5	5	1	0.95	-	N	Y	N	M	P	Top lopped off, Not in leaf, only epicormic growth showing signs of budding, shows signs of decline
G1	Malus sp	1.5	1.4	1	0.16	P-F	N	N	N	J	P	Some deadwood
G2	Malus sp	1.5-2	1.5	1	0.16-0.25	F	N	N	N	J	P	Some epicormic growth
G3	Populus sp	3	1	1	-	F	N	N	N	J	P	
G4	Populus sp	1-2.0	1	1	-	P	N	N	N	J	P	Dead leaders
G5	Malus sp	2.5	3	1	0.32	F	N	N	N	J-SM	P	
G6	Quercus sp	3.5	2	1	0.32	P	N	N	N	J-SM	P	Mostly dead, new growth is limited / close to trunk
G7	Cupressus sp	5.5	4	-	-	G	N	N	N	M	M	Good group, pairs with trees across the road
G8	Cupressus sp	8	5	1	-	G	N	N	N	M	M	

## **APPENDIX B: TREE ASSESSMENT PLAN**



LEGEND - Tree Assessment  
Sheets 101

BLOCK BOUNDARY

DEVELOPMENT BOUNDARY

VALUE RANKING

E EXCEPTIONAL

A tree / tree group that is an outstanding example of their species and have significant visual impact. They have most of the following: mature specimens with grand appearance and stature, may have unusual character, may be a rare species, well balanced, cultural heritage importance, significant scientific value, presents a low hazard/safety risk. Significant value within the landscape context of the site and should be preserved.

H HIGH

A tree / tree group that is a good example of their species and have significant visual impact. They have most of the following: high arboricultural value or potential, good form, good health, good size, little or no epicormic shoots or other arboricultural problems. Good value within the landscape context of the site and should be preserved if possible.

M MEDIUM

A tree / tree group that is generally complying with most of the following: reasonable form / reasonable current size, good health / growth potential, healthy specimen, presents a medium to low hazard / safety risk. Has some value within the landscape context of the site and should be retained if appropriate to land use and future management cost and risks.

P POOR

A tree / tree group generally complying with most of the following: specimen with poor growth or poor form and possible health problems, presents a high or very high hazard/safety risk. Has little value within the landscape context and to be removed if necessary. Can be retained if appropriate to land use and future management costs and risks.

L LOW

A tree / tree group that is generally complying with most of the following: specimen with low growth or poor form and possible health problems, presents a high or very high hazard/safety risk. Has little to no value within the landscape context and should be removed as part of development.

D DEAD

Dead tree

TREE ASSESSMENT NOTES:

1. Tree locations and measurements were quantified by a surveyor and were verified from site inspection undertaken by Enviro Links Design Pty Ltd (ELD). Tree numbers were allocated by ELD.
2. Inspection was limited to visual review by a Landscape Architect without coring, probing, excavation, dissection and laboratory analysis. No qualified Arborist review was undertaken. There is no guarantee or warranty that problems or deficiencies in the assessed trees may not arise in the near future or once construction activities commence.
3. Trees are not geometric elements; their positions, shapes, sizes and heights as indicated by the Surveyor and ELD are indicative only. Field checks are required on any tree or items or detail which are considered critical to the design.

TREE ASSESSMENT TABLE

Tree No / Group No	Botanical Name	Height (m)	Canopy dia. (m)	No. Trunks	Trunk circ. (m)	General Health (E/G/F/P)	Structural Defects / Decay (Y/N)	Past Damage / Root Disturbance (Y/N)	Disease / Infestation (Y/N)	Growth Stage (J/SM/M/OM)	Quality Rating (E/H/M/P)	Comments
4	Cupressus lusitanica	4.5	4	2	3	G	N	N	N	M	P	
5	Cupressus lusitanica	5.5	7	1	3.75	F	N	N	N	M	P	
6	Cupressus lusitanica	7	4	1	0.95	F	N	N	N	M	P	Over shaddowed and on lean
7	Cupressus lusitanica	5	4	6	2.8	F	N	N	N	M	P	Poor form
8	Cupressus lusitanica	7.5	6	1	2.2	F	N	N	N	M	M	
9	Cupressus sp	7.5	3	1	1	P	N	N	N	M	P	On lean and sparse canopy
10	Cupressus sp	6	4	1	1	P	N	N	N	M	P	
11	Cupressus lusitanica	8	7	1	2.8	P	N	N	N	M	P	
12	Dead											
13	Cupressus sempervirens	7	6	2	1.2	G	N	N	N	M	M	
14	Cupressus sp	5	2	1	0.5	P	N	N	N	M	P	Over shaddowed, sparse canopy
15	Cupressus sp	7	5	1	3.2	G	N	N	N	M	M	
16	Dead											
17	Cupressus arizonica	6	5	2	2.2	F	N	N	N	M	P	
18	Cupressus sp	4	1	1	0.5	P	N	N	N	M	P	Crowded by other trees
19	Cupressus sempervirens	4	3	4	1.4	P	N	N	N	M	P	Sparse canopy
20	Cupressus sempervirens	6	6	1	3.1	P	N	N	N	M	P	Some dead branches in top of canopy
21	Cupressus sempervirens	7	6	3	3.8	F	N	N	N	M	M	
22	Cupressus sempervirens	4.5	4	1	0.6	P	N	N	N	M	P	Crowded by other trees
23	Cupressus sempervirens	5	7	3	3	P	N	N	N	M	P	Appear to be dieing off
24	Cupressus sempervirens	6	5	1	1.1	F	N	N	N	M	P	
25	Cupressus sempervirens	5.5	3	1	0.5	F	N	N	N	M	P	Tall and affected by tree 12
26	Cupressus sempervirens	7	6	3	4.2	G	N	N	N	M	M	
27	Pyracantha sp	3	2	-	-	F	N	N	N	M	P	Scrappy form
28	Cupressus sempervirens	6.5	6	3	4.5	G	N	N	N	M	M	
29	Cupressus sempervirens	6.5	5.5	3	-	G	N	N	N	M	M	Some deadwood
30	Cupressus sempervirens	5	2	1	1.2	P	N	N	N	M	P	Poor form and dead lower branches
31	Cupressus sempervirens	4.5	2	1	0.3	F	N	N	N	M	P	Poor form / on lean
32	Cupressus sempervirens	4.5	2	2	1.2	F	N	N	N	M	P	Poor form
33	Cupressus sempervirens	7	10	1	3.2	G	N	N	N	M	M	
34	Populus sp	5.5	4	3	0.9	G	N	N	N	SM	M	
35	Malus sp	2.4	2	1	0.22	F	N	N	N	J	P	Epicormic growth from base
36	Prunus sp	3	2.5	-	-	F	N	N	N	J	P	Multi-leader / shrub habit
37	Prunus sp	3	2.5	-	-	F	N	N	N	J	P	Multi-leader / shrub habit
38	Cupressus arizonica	4	4.5	1	-	G	N	N	N	M	P	Stunted
39	Cupressus sempervirens	7	9	1	1.8	G	N	N	N	M	M	
40	Cupressus sp	5	3	1	1.1	F	N	N	N	M	P	
41	Cupressus sp	4	4	1	0.56	F	N	N	N	M	P	Poor form
42	Deciduous sp	7	3	1	0.56	-	N	Y	N	M	-	Not in leaf, only epicormic growth showing signs of budding, shows signs of decline
43	Deciduous sp	6	3	1	0.53	-	N	Y	N	M	-	Not in leaf, only epicormic growth showing signs of budding, shows signs of decline
44	Deciduous sp	5	5	1	0.95	-	N	Y	N	M	P	Top lopped off, Not in leaf, only epicormic growth showing signs of budding, shows signs of decline
G1	Malus sp	1.5	1.4	1	0.16	P-F	N	N	N	J	P	Some deadwood
G2	Malus sp	1.5-2	1.5	1	0.16-0.25	F	N	N	N	J	P	Some epicormic growth
G3	Populus sp	3	1	1	-	F	N	N	N	J	P	
G4	Populus sp	1-2.0	1	1	-	P	N	N	N	J	P	Dead leaders
G5	Malus sp	2.5	3	1	0.32	F	N	N	N	J-SM	P	
G6	Quercus sp	3.5	2	1	0.32	P	N	N	N	J-SM	P	Mostly dead, new growth is limited / close to trunk
G7	Cupressus sp	5.5	4	-	-	G	N	N	N	M	M	Good group, pairs with trees accross the road
G8	Cupressus sp	8	5	1	-	G	N	N	N	M	M	

I:\ELD Server\01 Projects\2022\22060 Cooma Polo Flat Road TAI\01 Drawings\00 AutoCAD\PRECINCT 2\22060 TREE.dwg

LANDSCAPE ARCHITECT

www.envirolinks.com.au  
Ph:(02) 6281 6066  
5 / 61 Dundas Court PHILLIP ACT 2606

CONSULTANTS

CIVIL STANTEC

CLIENT

NOTES

- COPYRIGHT AND PROPERTY OF ENVIRO LINKS DESIGN PTY LTD. MAY BE USED ONLY FOR THE STATED PROJECT AND ISSUE STATUS, AND IN ACCORDANCE WITH TERMS OF ENGAGEMENT FOR WHICH IT WAS COMMISSIONED.

- TO BE READ IN CONJUNCTION WITH ALL RELEVANT CONTRACTS, SPECIFICATIONS, REPORTS, DRAWINGS AND DEVELOPMENT APPROVAL CONDITIONS. OBTAIN ANY OUTSTANDING STATUTORY APPROVALS PRIOR TO COMMENCEMENT OF WORKS.

- ADOPT AND IMPLEMENT APPROVED TREE MANAGEMENT PLAN, LANDSCAPE MANAGEMENT & PROTECTION PLAN & ENVIRONMENTAL AUTHORISATIONS. ALL WORKS TO BE IN ACCORDANCE WITH COUNCIL REQUIREMENTS AND SPECIFICATIONS UNLESS OTHERWISE PRESCRIBED. ALL DISTURBANCE BY WORKS MUST BE REINSTATED TO EXISTING CONDITION.

REV	ISSUE	DATE	CHECK	DRAWN
A	FOR INFORMATION	14.10.2022	MR	PT
B	REVISED BLOCK BOUNDARY	17.10.2022	MR	PT

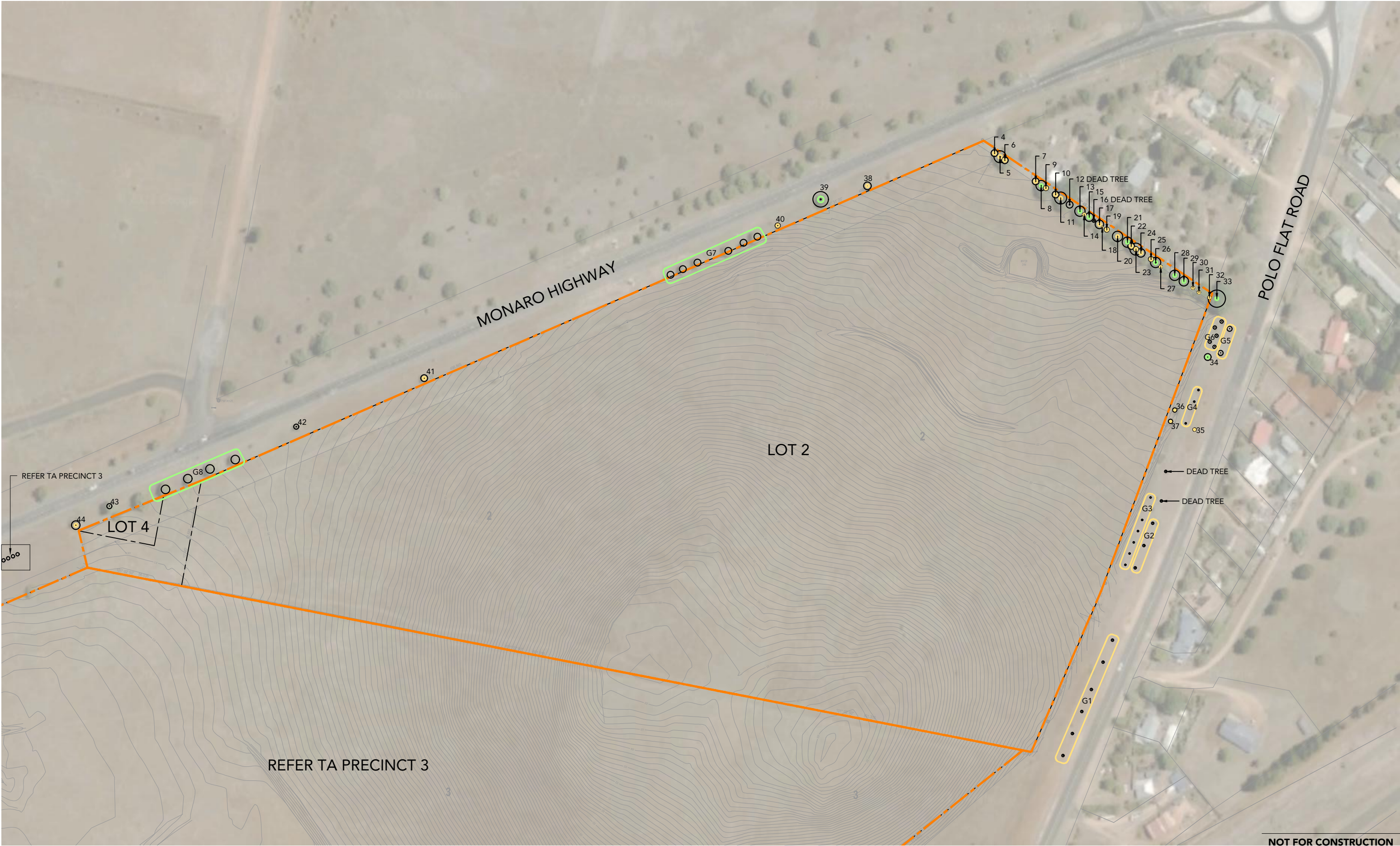
LOT 2 AND 4 POLO FLAT ROAD COOMA  
PRECINCT 2

TREE ASSESSMENT  
LEGEND & NOTES

JOB NO.  
22060

ISSUE.  
B





I:\ELD Server\01 Projects\2022\22060 Cooma Polo Flat Road TA\01 Drawings\00 AutoCAD\PRECINCT 2\22060 TREE.dwg

LANDSCAPE ARCHITECT



www.envirolinks.com.au  
Ph:(02) 6281 6066  
5 / 61 Dundas Court PHILLIP ACT 2606

CONSULTANTS  
CIVIL STANTEC

CLIENT



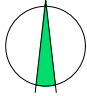
**NOTES**

- COPYRIGHT AND PROPERTY OF ENVIRO LINKS DESIGN PTY LTD. MAY BE USED ONLY FOR THE STATED PROJECT AND ISSUE STATUS, AND IN ACCORDANCE WITH TERMS OF ENGAGEMENT FOR WHICH IT WAS COMMISSIONED.
- TO BE READ IN CONJUNCTION WITH ALL RELEVANT CONTRACTS, SPECIFICATIONS, REPORTS, DRAWINGS AND DEVELOPMENT APPROVAL CONDITIONS. OBTAIN ANY OUTSTANDING STATUTORY APPROVALS PRIOR TO COMMENCEMENT OF WORKS.
- FIGURED DIMENSIONS TO BE TAKEN IN PREFERENCE TO SCALED MEASUREMENTS. DIMENSIONS IN MILLIMETRES UNLESS NOTED OTHERWISE.


WHERE ISSUED FOR CONSTRUCTION:

- CONTRACTOR IS RESPONSIBLE FOR LOCATING ALL SERVICES AND OBTAINING NECESSARY CLEARANCES AND APPROVALS.
- CONTRACTOR TO VERIFY DIMENSIONS, LEVELS & DETAILS TO SITE CONDITIONS AND PRIOR WORKS, AND REPORT ALL DISCREPANCIES TO THE SUPERINTENDENT FOR RESOLUTION BEFORE COMMENCING WORK.
- PRESENT SAMPLES AND GAIN APPROVAL FROM SUPERINTENDENT FOR ANY NOMINATED MATERIALS OR FINISHES.
- ADOPT AND IMPLEMENT APPROVED TREE MANAGEMENT PLAN, LANDSCAPE MANAGEMENT & PROTECTION PLAN & ENVIRONMENTAL AUTHORISATIONS. ALL WORKS TO BE IN ACCORDANCE WITH COUNCIL REQUIREMENTS AND SPECIFICATIONS UNLESS OTHERWISE PRESCRIBED. ALL DISTURBANCE BY WORKS MUST BE REINSTITATED TO EXISTING CONDITION.

REV	ISSUE	DATE	CHECK	DRAWN
A	FOR INFORMATION	14.10.2022	MR	PT
B	REVISED BLOCK BOUNDARY	17.10.2022	MR	PT



SCALE: 1:2000@A3



LOT 2 AND 4 POLO FLAT ROAD COOMA  
PRECINCT 2

**TREE ASSESSMENT  
PLAN 1**

JOB NO.  
**22060**

ISSUE.  
**B**

